

AC1605 Firmware Update Instructions

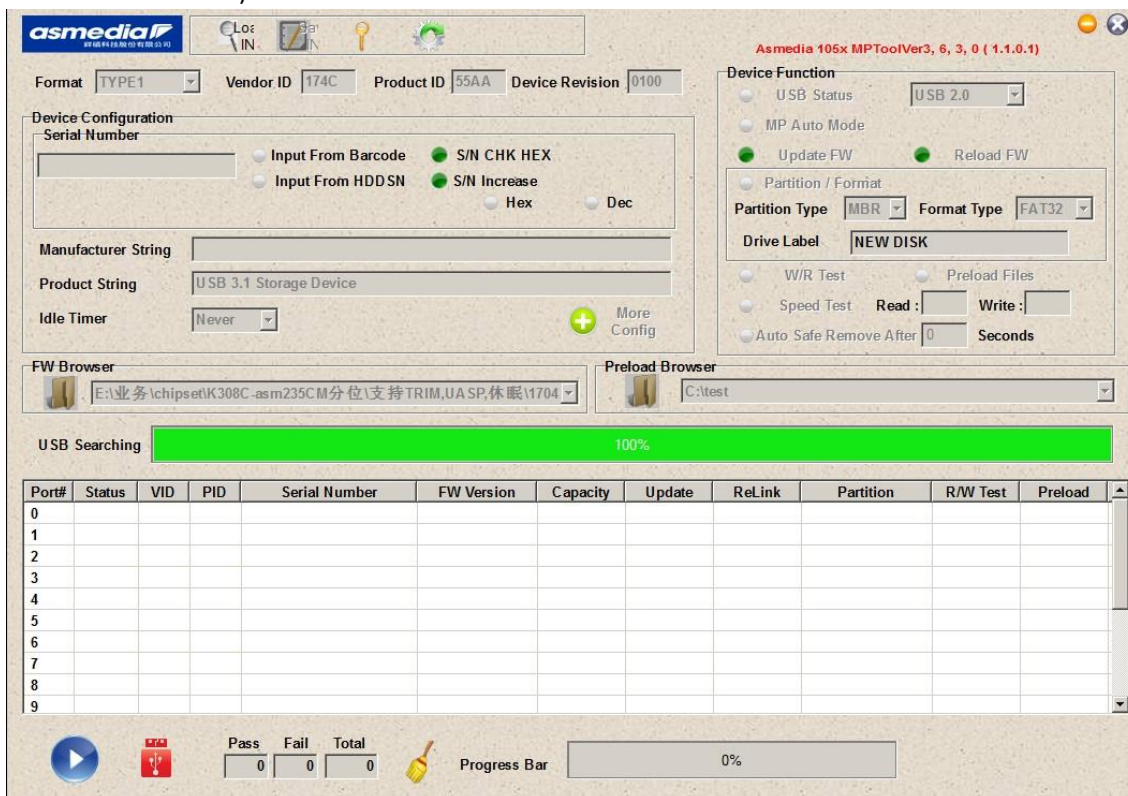
Nederlandstalige instructies zie pagina 2

English Instructions

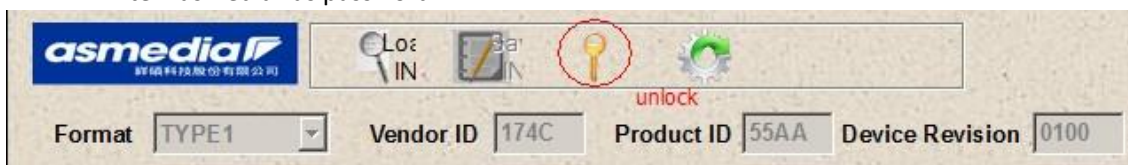
First of all make sure all other USB external Hard drives are disconnected from your Windows PC/laptop.

1.0 Update procedure

1. Unzip the zip file.
2. Start the MPTool.exe (run it as administrator by using the right mouse button and select Run as Administrator).



3. Press the "key icon" to unlock the tool.
4. Enter "asmedia" as password.



5. Connect the AC1605 (no other external HDD enclosures should be connected) to your PC
6. Click the "Folder icon" beneath the text "FW Browser"

Format: TYPE1 Vendor ID: 174C Product ID: 55AA Device Revision: 0100

Device Configuration

Serial Number:

☐ Input From Barcode ☒ S/N CHK HEX

☐ Input From HDDSN ☒ S/N Increase

☐ Hex ☐ Dec

Manufacturer String:

Product String: USB 3.1 Storage Device

Idle Timer: Never

FW Browser ☒ E:\业务\chipset\K308C-asm235CM分位\支持TRIM,UASP,休眠\1704

Preload Browser ☐ C:\test

7. Select the *.bin file stored in the unzipped folder
8. Click the "Play icon" on the bottom left to start firmware update and wait until the progress bar reaches 100% the FW update is now successful.

Nederlandstalige instructie

Zorg er als eerste voor dat alle externe harde schijven ontkoppeld zijn van je Windows PC/laptop.

1.0 Update procedure

1. Pak het zip-bestand uit.
2. Start MPTool.exe (selecteer met de rechtermuisknop en selecteer "Uitvoeren als administrator").

Asmedia 105x MPToolVer3, 6, 3, 0 (1.1.0.1)

Format: TYPE1 Vendor ID: 174C Product ID: 55AA Device Revision: 0100

Device Configuration

Serial Number:

☐ Input From Barcode ☒ S/N CHK HEX

☐ Input From HDDSN ☒ S/N Increase

☐ Hex ☐ Dec

Manufacturer String:

Product String: USB 3.1 Storage Device

Idle Timer: Never

FW Browser ☒ E:\业务\chipset\K308C-asm235CM分位\支持TRIM,UASP,休眠\1704

Preload Browser ☐ C:\test

Device Function

☐ USB Status: USB 2.0

☐ MP Auto Mode

☒ Update FW ☒ Reload FW

☐ Partition / Format

Partition Type: MBR Format Type: FAT32

Drive Label: NEW DISK

☐ W/R Test ☐ Preload Files

☐ Speed Test Read: Write:

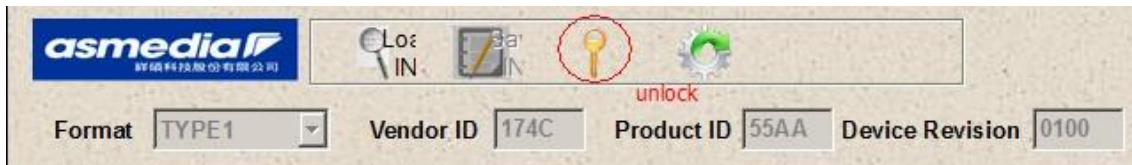
☐ Auto Safe Remove After: 0 Seconds

USB Searching: 100%

Port#	Status	VID	PID	Serial Number	FW Version	Capacity	Update	ReLink	Partition	R/W Test	Preload
0											
1											
2											
3											
4											
5											
6											
7											
8											
9											

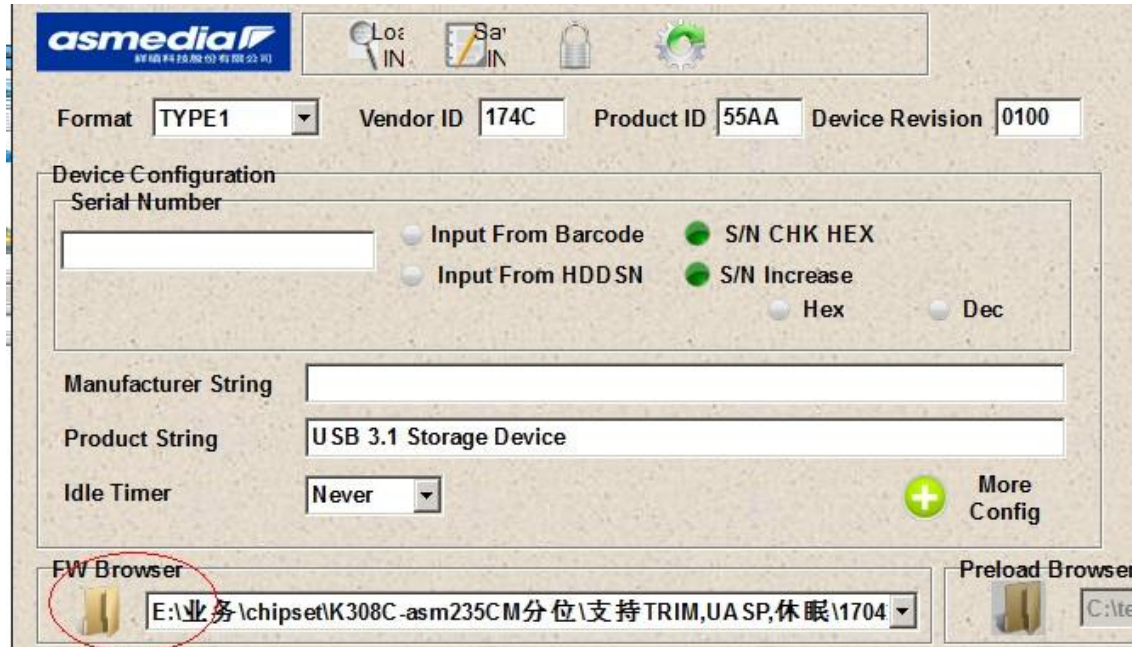
Pass: 0 Fail: 0 Total: 0 Progress Bar: 0%

3. Druk op het "sleutel pictogram" om de tool te ontgrendelen.
4. Voer "asmedia" in als wachtwoord.



5. Sluit de AC1605 (geen andere externe harde schijven aangesloten) aan op uw pc

6. Klik op het "Map pictogram" onder de tekst "FW Browser"



7. Selecteer het *.bin-bestand dat is opgeslagen in de uitgepakte map

8. Klik linksonder op het pictogram 'Afspelen' om de firmware-update te starten en wacht tot de voortgangsbalk 100% heeft bereikt. De FW-update is nu succesvol