

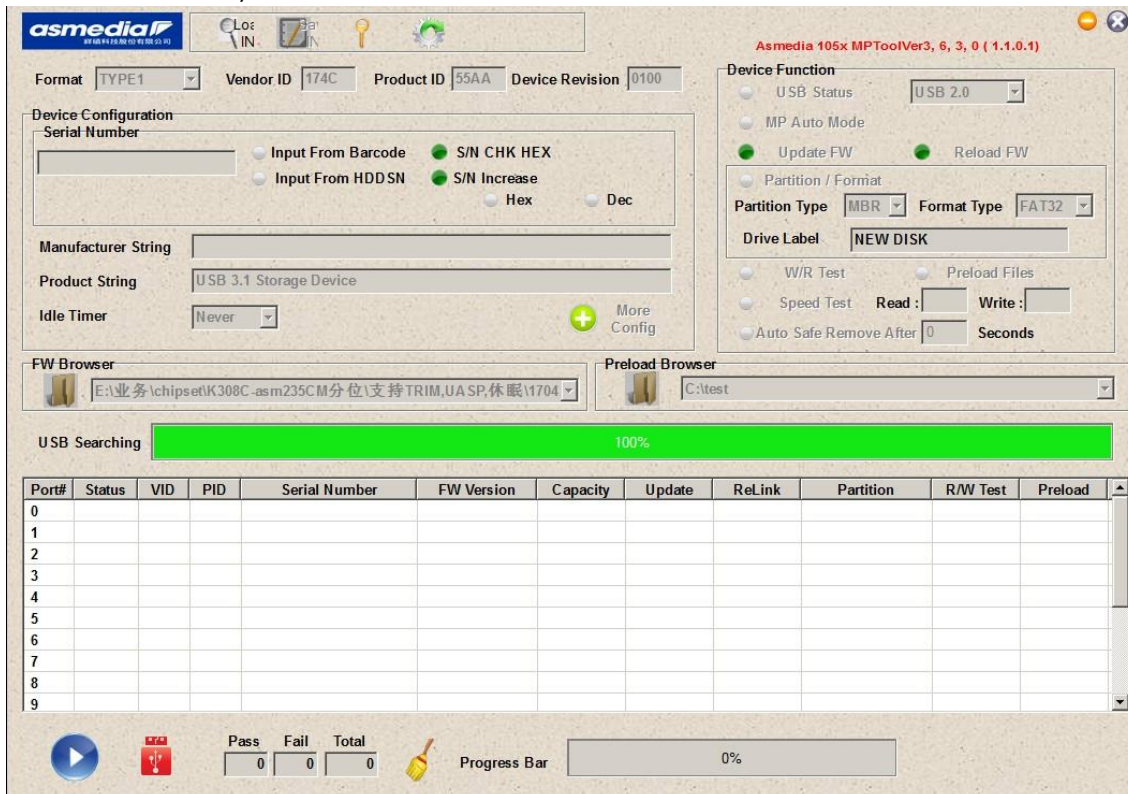
AC1225 Firmware Update Instructions

Nederlandstalige instructies zie pagina 2

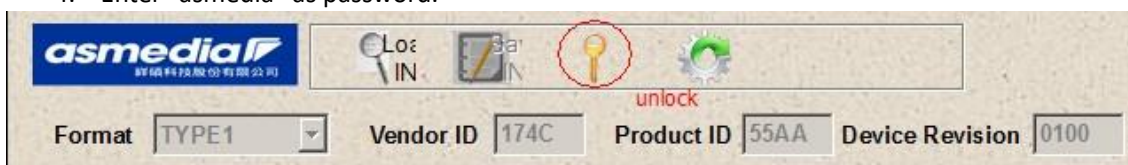
English Instructions

1.0 Update procedure

1. Unzip the zip file.
2. Start the MPTool.exe (run it as administrator by using the right mouse button and select Run as Administrator).



3. Press the “key icon” to unlock the tool.
4. Enter “asmedia” as password.



5. Connect the AC1225 to your PC
6. Click the “Folder icon” beneath the text “FW Browser”

The screenshot shows the Asmedia MPTool interface. At the top, there are icons for 'Loc IN', 'Sa IN', a lock, and a gear. Below these, the 'Format' is set to 'TYPE1', 'Vendor ID' is '174C', 'Product ID' is '55AA', and 'Device Revision' is '0100'. The 'Device Configuration' section includes a 'Serial Number' field, 'Input From Barcode' and 'Input From HDDSN' radio buttons, 'S/N CHK HEX' and 'S/N Increase' checkboxes, and 'Hex' and 'Dec' radio buttons. The 'Manufacturer String' and 'Product String' (set to 'USB 3.1 Storage Device') are shown. The 'Idle Timer' is set to 'Never'. A 'More Config' button is present. The 'FW Browser' section shows a file path: 'E:\业务\chipset\K308C-asm235CM分位\支持TRIM,UASP,休眠\1704'. The 'Preload Browser' section shows a file path: 'C:\test'.

7. Select the *.bin file stored in the unzipped folder
8. Click the "Play icon" on the bottom left to start firmware update and wait until the progress bar reaches 100% the FW update is now successful.

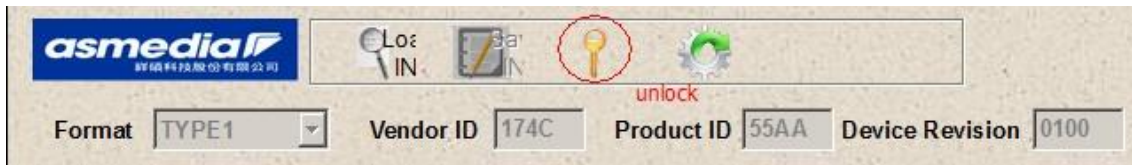
Nederlandstalige instructie

1.0 Update procedure

1. Pak het zip-bestand uit.
2. Start MPTool.exe (selecteer met de rechtermuisknop en selecteer "Uitvoeren als administrator").

The screenshot shows the Asmedia 105x MPTool interface. At the top, there are icons for 'Loc IN', 'Sa IN', a key, and a gear. Below these, the 'Format' is set to 'TYPE1', 'Vendor ID' is '174C', 'Product ID' is '55AA', and 'Device Revision' is '0100'. The 'Device Configuration' section includes a 'Serial Number' field, 'Input From Barcode' and 'Input From HDDSN' radio buttons, 'S/N CHK HEX' and 'S/N Increase' checkboxes, and 'Hex' and 'Dec' radio buttons. The 'Manufacturer String' and 'Product String' (set to 'USB 3.1 Storage Device') are shown. The 'Idle Timer' is set to 'Never'. A 'More Config' button is present. The 'FW Browser' section shows a file path: 'E:\业务\chipset\K308C-asm235CM分位\支持TRIM,UASP,休眠\1704'. The 'Preload Browser' section shows a file path: 'C:\test'. The 'Device Function' section includes 'USB Status' (set to 'USB 2.0'), 'MP Auto Mode', 'Update FW' and 'Reload FW' checkboxes, 'Partition / Format' section with 'Partition Type' (set to 'MBR') and 'Format Type' (set to 'FAT32'), 'Drive Label' (set to 'NEW DISK'), 'W/R Test', 'Preload Files', 'Speed Test', 'Read' and 'Write' fields, and 'Auto Safe Remove After' (set to '0') 'Seconds'. The 'USB Searching' progress bar is at 100%. Below the progress bar is a table with columns: Port#, Status, VID, PID, Serial Number, FW Version, Capacity, Update, ReLink, Partition, R/W Test, Preload. The table has 10 rows (0-9). At the bottom, there is a 'Pass', 'Fail', 'Total' section with values 0, 0, 0. A 'Progress Bar' is at 0%.

3. Druk op het "sleutel pictogram" om de tool te ontgrendelen.
4. Voer "asmedia" in als wachtwoord.



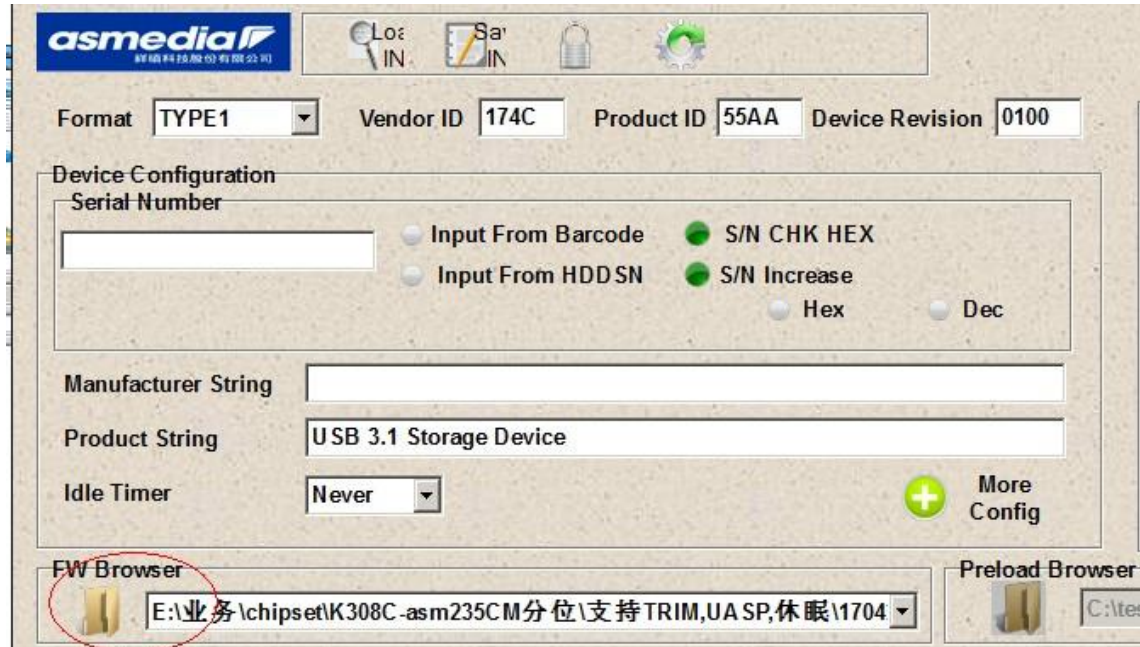
asmedia
ASMedia Technology Inc.

Log IN | Save IN | **unlock** | Settings

Format: TYPE1 | Vendor ID: 174C | Product ID: 55AA | Device Revision: 0100

5. Sluit de AC1225 aan op uw pc

6. Klik op het "Map pictogram" onder de tekst "FW Browser"



asmedia
ASMedia Technology Inc.

Log IN | Save IN | Settings

Format: TYPE1 | Vendor ID: 174C | Product ID: 55AA | Device Revision: 0100

Device Configuration

Serial Number

☐ Input From Barcode ☒ S/N CHK HEX

☐ Input From HDDSN ☒ S/N Increase

☐ Hex ☐ Dec

Manufacturer String:

Product String: USB 3.1 Storage Device

Idle Timer: Never More Config

FW Browser

Preload Browser

7. Selecteer het *.bin-bestand dat is opgeslagen in de uitgepakte map

8. Klik linksonder op het pictogram 'Afspelen' om de firmware-update te starten en wacht tot de voortgangsbalk 100% heeft bereikt. De FW-update is nu succesvol